



Ford Ranger / Everest Next Gen

MY2022 Onwards

Bash Plate

IMPORTANT! – READ BEFORE INSTALLATION

- This product must be installed exactly as per these instructions using only hardware supplied.
- Take a few moments to read instructions thoroughly before beginning work.
- In the event of damage to any component please contact OFFROAD ANIMAL to arrange repair/replacement of components.
- Do not use this product for any vehicle make or model other than that specified on these instructions.
- This product and its fixings must not be modified in any way unless stated in these fitting instructions.
- The installation of this product is recommended for trained personnel.
- These instructions are correct at time of publication. OFFROAD ANIMAL cannot be held responsible for the impact of any changes subsequently made by the vehicle manufacturer. If you find something has changed please contact us to let us know!
- During installation it is the duty of the installer to check correct operation/clearances of all components.
- If Instructions are to be printed for reference in the workshop, it is recommended that they are printed in colour, for best legibility.
- Fitting time: 20 min

GENERAL CARE AND MAINTENANCE

Only wash the product with a PH neutral car wash to prevent paint damage and discolouration.

Plastic parts may be maintained with silicone spray.

Do not use acidic or alkaline based cleaning products.

It is important to perform regular checks (pre trip or on an annual basis) on the installed product. Checks include:

- Visual inspection for damage (eg. cracks, chips, dents etc.)
- Electrical wiring is not rubbing anything or worn out
- Bolts are torqued to correct specification (see torque guide below)

For touching up small stone chips, Offroad Animal recommends the following paint products:

- Dupli-Color Trim & Bumper Paint Black (TB101)
- VHT Hood, Bumper & Trim Paint Black (SP27)

BOLT TORQUE SETTINGS

Use the following bolt torques on all fasteners, unless otherwise specified.

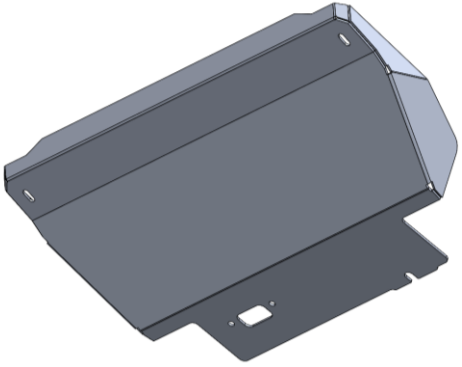
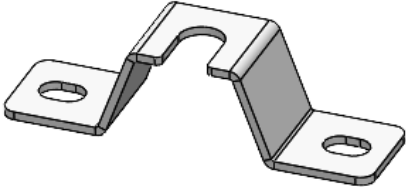
Always use a torque wrench to set correct torque settings. Ensure torque wrench is set to Nm unit of measurement. Otherwise perform conversion to lb-ft.

| Size | Torque Nm |
|------|-----------|
| M5 | 5 Nm |
| M6 | 9 Nm |
| M8 | 22 Nm |
| M10 | 44 Nm |
| M12 | 77 Nm |

PARTS LISTING

IMPORTANT: Check all parts are present before beginning work! Contact OFFROAD ANIMAL if something is missing.

Main Parts – In the Box

| Qty | Part Number | Description | Image |
|-----|-------------|---|--|
| 1 | U-0112 | Next Gen Ranger Lower Bash Plate |  |
| 1 | B-0807 | Next Gen Lower Bash Plate Support Bracket |  |

Small Parts – Contained in Small Parts Kit Bag

| Qty | Part Number | Description |
|-----|----------------|--|
| 2 | M10 FLANGE NUT | Flange Nut, M10x1.5 G8.8 ZP |
| 2 | M10X20 BHCS | SCREW, BUTTON HEAD CAP, M10X20X1.5 GR12.9 ZP |
| 2 | M10 FW LHD | WASHER, FLAT M10X28.5X2.5 |





TOOLS REQUIRED

The following tools will be required to install the product.

| Hand Tools | Power Tools | Workshop Equipment |
|--|--|--------------------|
| 15mm Spanner or Socket 6mm Allen/Hex Key | Air / Electric Impact Wrench - Optional | None |

WORKSHOP SAFETY

It is the responsibility of the installer to always complete works in a safe manner. Make sure the following safety equipment is available and precautions are observed whilst fitting this product.

| | |
|---|--|
| <p>Hearing Protection</p>  | <p>Always wear ear protection when using power tools.</p> |
| <p>Eye Protection</p>  | <p>Ensure eye protection is always worn when cutting or drilling.</p> |
| <p>Manual Handling</p>  | <p>Do not attempt to lift bar assemblies or rock sliders on your own.</p> <p>Always use two people to lift or use mechanical Lifting aid such as hydraulic lifting trolley.</p> |
| <p>Vehicle Support</p>  | <p>Always ensure vehicle is properly supported when working on it. Do not attempt to fit products whilst suspension work is being carried out. Do not work under a vehicle supported only by a jack.</p> |



1. Fit the rear support bracket to the main bash plate, using supplied M10x20 Button head bolts, flat washers and Flange Nuts. Ensure the open slot faces towards the back of the bash plate.
2. Tighten with 6mm Hex Key.

TOOLS REQUIRED

6mm Hex Key

FASTENERS



3. Remove factory Lower splash shield panel, by removing the 4x 15mm head Flanged head hex bolts securing it to the chassis.
4. Retain factory Bolts for re-use, discard the lower splash shield.
5. If fitting with Offroad Animal Bullbar, retain the M10 Flange nuts from the front mounting point for re-use.

TOOLS REQUIRED

15mm Socket / Spanner

FASTENERS

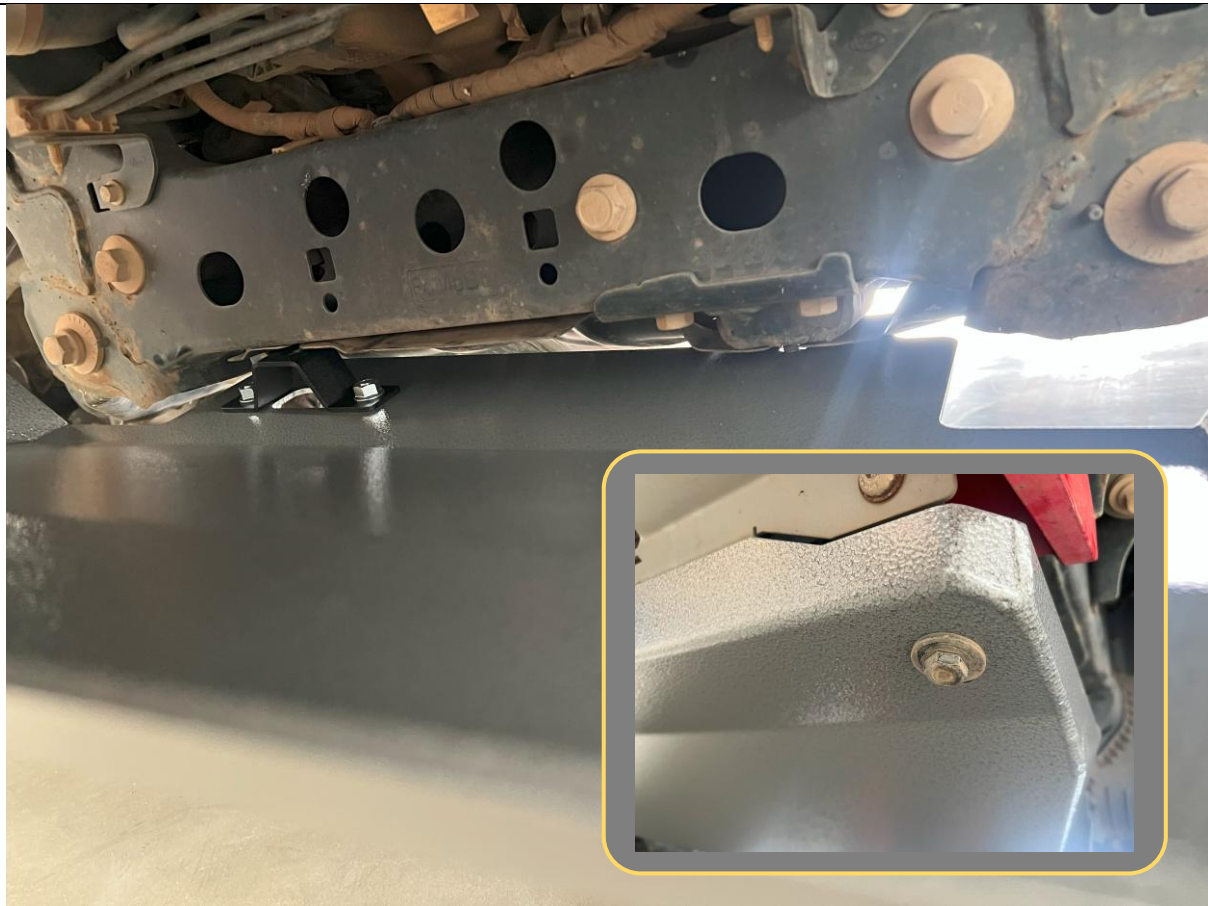
Retain for re-use



6. Replace the 2x rear bolts into the threaded points in the chassis, leaving plenty of thread exposed to allow the bash plate to slide over during fitment.
7. Position and orient the bash plate as shown in preparation for fitment.

TOOLS REQUIRED**FASTENERS**

2x Factory Flange Bolts



8. Lift bash plate to chassis, and slide between the 2x rear bolts and chassis rail.
9. Secure the front of the bash plate to the chassis with original flange bolts, into mounting points on the chassis.
10. If fitted with Offroad Animal bullbar the front mount will need to re-use the M10 Flange nut supplied with the bullbar kit.

TOOLS REQUIRED**FASTENERS**

Re-use Factory hardware



11. Tighten the 4x 15mm Factory Flange Bolts.

12. With that you are done!

TOOLS REQUIRED

15mm Socket / Spanner

FASTENERS



Congratulations!

Head for the tracks and enjoy your newly protected Rig!